

# Pre Unit: “The Global Environment”

Mr. Meetze

Global History

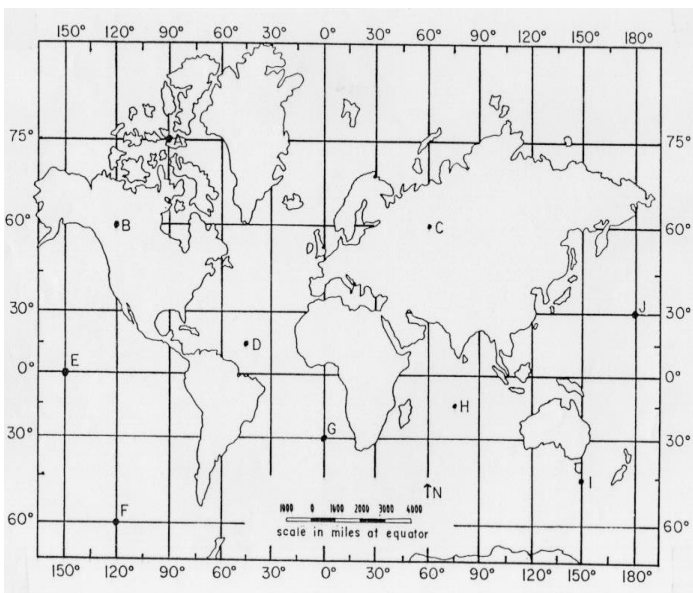
## “The Social Science of **Geography** vs. the Social Science of **Topography**”

Page 4-10

**Question:** ‘**Mr. Help**’ would like to know if you know the **5 Themes of Geography** and can give a specific world-wide example of each theme listed.



1. **M**\_\_\_\_\_ of people includes both forms of ***Migration*** and ***Immigration***
2. What is a **Region**?
3. How do **Humans** interact with their **Environment**?  
*‘Remember that Man can interact with his environment by...’ (3 ways)*
4. What does one’s **Location** actually determine?
5. Give an example of both a Natural and Man-Made Place...



### **Location, Location, Location**

Using the Map to the left answer the following questions...

-The lines of **Latitude** travel from \_\_\_\_\_ to \_\_\_\_\_ while measuring the distance from \_\_\_\_\_ to \_\_\_\_\_.

-The lines of **Longitude** travel from \_\_\_\_\_ to \_\_\_\_\_ while measuring the distance from \_\_\_\_\_ to \_\_\_\_\_.

### ***Discussion Questions?***

Using point **B** and **C** How does your **Longitude** coordinates affect the telling of time? Why?

Using point **B** and **I** How does your **Latitude** coordinates affect the local climate type? Why?

# Pre Unit: “The Global Environment”

Mr. Meetze

Global History

## Topography or the Study of

*Directions: Briefly describe the following physical features with a working definition and give a specific Global example found in the world today*

Pgs. 836-837

*Explain how the feature could influence development of early man at the dawn of civilization. For each feature determine if the ability to **Trade, Travel, Culturally Diffuse (C.D.)**, develop **Farming**, provide **Protection**, and impact **Communication** would **Increase** or **Decrease***

### A ‘Regular’ Coastline

Ex.

### An Irregular Coastline

Ex.

### Climate of a Desert

Ex.

### Difference between Archipelago and Island

Ex.

### Difference between an Isthmus and a Strait

Ex.

### Difference between a Sea and an Ocean

Ex.

### Difference between a Plain and a Mountain

Ex.

### Formation of a Peninsula

Ex.

### River Valley and the formation of a Delta

# Pre Unit: "The Global Environment"

Mr. Meetze

Global History

Ex.

**Give 3 Separate Examples of how Western New Yorkers have been able to Reshape and/or Adapt to our environment during the past 100 years. Be sure to include specific changes explaining both the positive and negative effects to the environment. (15pts)**

1.

2.

3.

**\* All Writing Needs to be Finished in Complete Sentences for credit!!!\***

**Physical Feature Map Directions:** *Using an atlas or your books atlas (pgs.573, 575, 577, 579, and 580) label the following physical features on the world map*

Ural Mts.	Black Sea	Gulf of Mexico	Yellow River
Himalayan Mts.	Caribbean Sea	Persian Gulf	Tigris River
Andes Mts.	Caspian Sea	Bay of Bengal	Amazon River
Pyrenees Mts.	Mediterranean Sea	<i>Suez Canal*</i>	Euphrates River
Alp Mts.	North Sea	<i>Tundra*</i>	Indus River
Arctic O.	Red Sea	<i>Savannah*</i>	Nile River
Atlantic O.	Yellow Sea	Sahara Desert	Rio Grande River
Pacific O.	Baltic Sea	<i>Pampas*</i>	Yangtze River
Indian O.	Arabian Sea	Gobi Desert	Mekong River
Southern O.		Panama Canal	Ganges River

*\* In class we will add the italic features \**

**Political Map Directions:** *Using an atlas or you book atlas on pgs. 570-571 label the following countries on the world map*

U.S.A	Canada	Cuba	Mexico
Argentina	Columbia	Brazil	S.Africa
Congo	Sudan	Rwanda	Somalia
Kenya	Ethiopia	Libya	Egypt
S.Arabia	Kuwait	Iran	Iraq
Israel	Pakistan	India	Bangladesh
Vietnam	Indonesia	Philippians	China
N.Korea	S.Korea	Japan	Russia

## Pre Unit: “The Global Environment”

Mr. Meetze

Global History

Ireland  
Germany  
Sweden  
Turkey

United Kingdom.  
Poland  
Finland  
Afghanistan

France  
Italy  
Mali

Spain  
Norway  
Ghana

## Elements of Culture – A Visual Illustration

Using drawings or pictures explain your own culture that shows a true representation of what **“To Be an American”** means.

Your visual will be worth 60 points and will be graded on accuracy of Symbol, Neatness, Color, and ability to identify the Culture Characteristic.  
(Lack of Color -30)

You must use at least 10 different aspects of American Culture to receive full credit. Good Luck!!

# Pre Unit: “The Global Environment”

Mr. Meetze

Global History

## *What is one's Culture?*



List 10 specific Characteristics that make up the ‘General’ Culture

- |               |    |     |
|---------------|----|-----|
| #1 Diet/ Food | #2 | #3  |
| #4            | #5 | #6  |
| #7            | #8 | #9  |
|               |    | #10 |

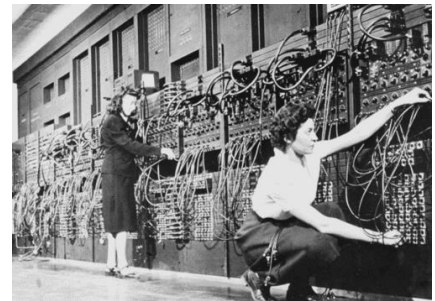
## Top Three Causes of Cultural Change Throughout History

#1 How and Why does **War** help lead to Cultural Change throughout a society?



#2 **Technologies** or...

- Technological advances have helped to Shrink existing geographic barriers turning the world into a ‘\_\_\_\_\_’, which has helped lead to...
- Unfortunately, the use of Technology can also **Weaken Traditional Values** and **Beliefs** by...



# Pre Unit: “The Global Environment”

Mr. Meetze

Global History

## # 3 Cultural Diffusion *or* ...

### How People ‘Deal ‘with Other Cultures

Many cultures throughout the world today are tolerant and understanding of other people’s personal ways of life. However, some cultures unfortunately may choose to understand and deal other peoples ways of life through **Stereotyping** (thoughts), **Prejudices** (feelings), **Discriminating** (actions), **Ethnocentrism**, and numerous **Negative Ism’s**.

‘Ethnocentrism’

vs.

‘Negative Ism’s’

(List 5 types of ism’s)



***How can Technology lead to Cultural Change throughout Societies?*** (15points)

Choose 1 Technological Advance

Explain how that technology Specifically Changed on Population

- 1.
- 2.
- 3.

#### **Write a Paragraph**

*(Minimum of 7sentences)*

*Assume that Cultural diffusion continues at its current rapid pace what Positive and Negative Results do you foresee for people Locally, Nationally, and Globally?*

15 points

# Pre Unit: “The Global Environment”

Mr. Meetze

Global History

## Politics? What Are You Talking About?

Why Do We Need a Politics System in our Society? (List 8 Aspects)

*What is considered Anarchy =*

\* \* \* \* \*

### Democratic Governments

### VS. Totalitarian Governments

Specific Type of Democratic  
Governments

- 1.
- 2.

Specific Types of Totalitarian  
Governments

- 1.
- 2.
- 3.
- 4.
- 5.

*Characteristics of All  
Democratic Governments*

*Characteristics of All  
Totalitarian Governments*



# Pre Unit: “The Global Environment”

Mr. Meetze

Global History

## Economics Made Easy!!!

What Are **Economic Systems**?

The ‘Means or Factors of Production’

-Brainstorm 6 General Categories one needs to begin any type of business.

**ALL Economic Systems** Determine...?

**A. What to**

**B. How to**

**C. Where to**

In the Past ‘**Traditional**’ Economic Systems have consisted of.....

---

## 2 Major Types of Economic Systems

The **Free-Market Economy**  
(known as ‘**Capitalism**’)

vs. The **Command Economy**  
(known as ‘**Planned**’ Economy)

\*

-

\*

-

\*

-

\*

-

\*

-

\*

-



# Pre Unit: “The Global Environment”

Mr. Meetze

Global History

\*

-

\*

-